



# SERVICE GUIDE

2025

## Your service includes:

1. Bi-weekly Recycle Service: **90 gallon**



90  
gallon  
cart

2. Weekly Organic Waste Service: **90 gallon**



90  
gallon  
cart

3. Weekly Waste Service: **60 or 90 gallon**



60 or 90  
gallon  
cart

Choose the waste cart that best fits your household needs.



Cart size in gallons	
60	90
Approximate number of tall kitchen bags	
5	7

4. Annual Residential Clean-Up for extra garbage and bulky furniture items (see page 2 for details).

## What belongs in each cart?

Please take the time to recycle right. When carts are misused, service can be delayed and extra fees applied.

### Blue Cart

Put recyclables in the blue cart. When in doubt, throw it out.

junk mail, newspapers, magazines, catalogs, cardboard, white/colored papers, packaging, tubes, aluminum cans, glass bottles/jars, plastic bottles/tubs, non-soiled food containers



Please scrape and rinse containers before placing in recycle cart. Do not use liner bags.

### Green Cart

Put yard trimmings & food waste in the green cart.

branches (less than 6" in diameter and 3' in length), grass clippings, weeds/leaves/flowers, plate scrapings, meat, vegetables, egg shells, bread, dairy, bones and food-soiled paper/cardboard products



NO plastic, biodegradable or compostable bags. NO pet waste, dirt, sod, rock, brick or concrete.

### Gray Cart

Put garbage in the gray cart.

Common items include pet waste, diapers, plastic bags\* & wrap, broken kitchen plates and cups, tempered glass, sponges, rugs, hangers, clothing and shoes



Please bag pet waste.

\*Check with local grocery stores for plastic bag recycling


## On your collection day:

- Place your carts out with the wheels at least one foot from the curb prior to 4AM.
- Leave 3 feet of space between each cart.
- Carts must be a minimum of 6 feet from any vehicles.
- Remove all bags from the Recycle and Organics carts before collection. Bags are prohibited in these carts and may result in notice of violation and service delays.
- Avoid placing carts near low-hanging tree branches, fire hydrants, parked cars and other obstacles.
- Do not overload your carts- make sure the lids are fully closed and materials are not too tightly wedged inside. This will help prevent litter and ensure your carts are fully emptied.

## Annual Residential Clean-Up

Residents of Mountain House can schedule one free curbside clean-up per calendar year.

- (10) 32 gallon bags of garbage or equivalent **and**
- One large furniture item. Common large items: bookcase, mattress, sofa, table
- Any wood or brush set out must be 4 feet in length (or less) and bundled
- An appointment is required and must be made in advance. Same day appointments unavailable.
- Residential account must be active and current (i.e. no past due amounts) with Inframark to schedule the annual clean-up.
- Residents residing in an HOA must contact the HOA to arrange for clean-up services.

 **Excluded items** include TV's, computers, refrigerator, air conditioners\*, motor vehicle parts (car, truck, equipment), tires, construction & demolition debris, Hazardous Waste, dirt, rock, concrete, asphalt, tile, sand, stucco, or unidentified/unlabeled containers.

\*These regulated items require special handling and will be picked up for a fee. Please call West Valley Disposal to discuss fees and to arrange pickup.

## Ready to schedule?

- Call 209-835-3639 to schedule your clean-up.
- Tell us what you will be putting at the curb for collection so we can send the right type of collection vehicle.
- Contain loose items in bags or boxes.
- Tie carpet in rolls 4 feet or less.
- Place items neatly at the curb in front of your residence no later than 4:00 a.m. the day of scheduled collection and no earlier than the night before your scheduled collection day.

## Household Hazardous Waste - HHW

Household Hazardous Waste (HHW) is any waste generated from the use of a product containing a hazardous material that, if misused or improperly disposed of, could



pose a threat to human health and/or the environment. HHW should never be placed in a cart, washed down the drain, poured in the street gutter or poured onto the ground.

Please protect the health and safety of our workers by properly disposing of sharps and other hazardous materials.

Call the San Joaquin County Household Hazardous Waste Consolidation Facility at **209-468-3066** or visit <https://www.sjgov.org/department/pwk/solid-waste> for hours, drop-off locations and accepted materials.

## Debris Box Rental Services

Cleaning out your garage or storage? Planning a construction, demolition or landscape project? Rent a debris box! Sizes range from 1.5 cubic yards to 40 cubic yards.

- Sizes 1.5 cubic yards to 6 cubic yards.  
**These containers are recommended for small to moderate material disposal.**
- Sizes 10 cubic yards to 40 cubic yards.  
**These containers are recommended for large scale projects, demolition, home renovation and bulky item disposal.**



## Special Handling Items, Appliances

Residents must notify West Valley Disposal Service prior to placing any appliances, white goods, or any other items requiring special handling such as TV's, freezers, refrigerators or air conditioners at the curb.



### Statewide Organic Waste Regulations: SB 1383 Short-Lived Climate Pollutants

SB 1383 is the most significant waste reduction mandate to be adopted in California in the last 30 years and is part of a statewide commitment to reduce the emissions of short-lived climate pollutants, like methane gas, in various sectors of California's economy. The State has committed to reduce greenhouse gas emissions, improve health, and create clean jobs that support resilient local economies.

#### SB 1383 Targets

- Statewide reduction of organic waste disposal by 75% by 2025.
- Rescue at least 20% of edible food that is currently going to the landfill by 2025.

#### What is Organic Waste and why is it important to divert it from the landfill?

When we are talking about organic waste for the purposes of SB 1383, we are talking about Green Waste, Wood Waste, Food Waste and fibers such as Paper and Cardboard. Landfilling organic waste leads to the anaerobic breakdown of that material, which creates methane. Currently landfills are responsible for 21% of the state's methane emissions. Diverting organic waste to a recycling facility can significantly reduce local air quality emissions and associated negative environmental and health impacts.

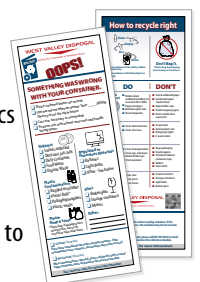
#### What happens to Organic Waste in my community?

Organic waste is delivered to Tracy Material Recovery for processing. Yard trimmings and food scraps are composted in an open-windrow composting system. This process takes several weeks and close monitoring. The product of composting is a nutrient rich soil amendment that is sold by the yard. Much of the material processed from the community remains local as it is reintroduced into landscapes, gardens, fields and orchards as nutrient rich compost.

Fiber products such as paper and cardboard are recycled into new products.

#### How does SB 1383 affect me?

- All residents and businesses are required to divert all organic waste from the landfill.
- Businesses are required to place labeled bins for recycling and organics recycling next to all waste containers.
- Some businesses are required to recover edible food for human consumption.
- West Valley Disposal will perform Curbside Audits and Route Reviews to assist customers with program compliance.



## Tracy Material Recovery & Solid Waste Transfer Facility

30703 South MacArthur Drive – Tracy

**209.832.2355** ♦ [support@tracymaterialrecovery.com](mailto:support@tracymaterialrecovery.com) ♦ [www.tracymaterialrecovery.com](http://www.tracymaterialrecovery.com)



#### Public Disposal and Material Processing Facility

- Monday-Friday 8AM-4PM
- Saturday 8AM-3:30PM
- Sunday closed

- Public waste disposal
- Reduced rates for clean loads of wood and green waste
- Compost & Wood Chips sales
- Mattress recycling